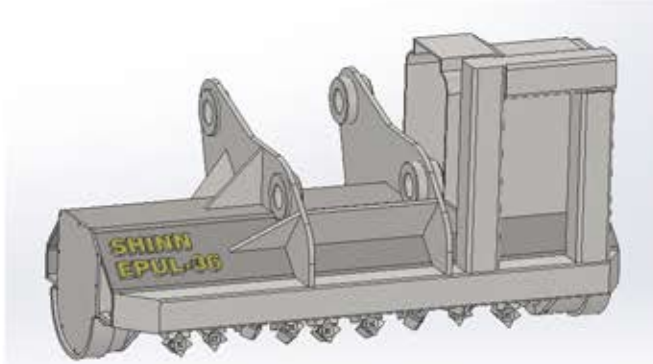


**SHINN  
SYSTEMS**  
THE INTELLIGENT APPLICATION OF POWER  
(704) 597-2005 or Direct Line (704) 791-6259

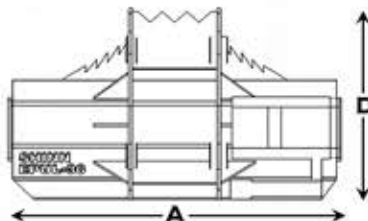
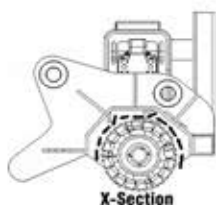
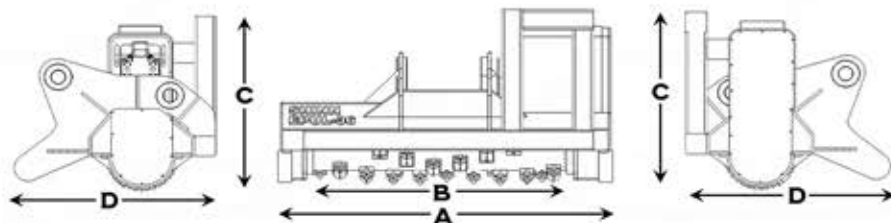
# EPUL-36

## Excavator Powered Ultra Light Cutter Head



### Specifications

Weight	1.100 lbs (498 kg.)
Number of teeth	32
Tooth Type	Quadco 10020 (or equivalent)
Rotor RPM	2,400
Rotor Diameter	6" (152.4 mm)
Rotor Thickness	3/8" (9.5 mm) ASTM 401 Seamless
Maximum Rated Pressure	5,500 PSI (380 BAR)
Minimum Pressure	4,000 PSI (280 BAR)
Motor Displacement	3.35 cubic in/rev. (55 cc/rev.)
Flow Maximum***	35 GPM (132 LPM)
Flow Minumim	16 GPM (83 LPM)
Minimum Excavator HP	65
Mainshaft Diameter	1-15/16" (41.25 mm)-Solid Through Shaft Design
Effective Cutting Width	35" (8.89 cm)
Drive System	Gates PolyChain GT2
Shield Construction	3/8" (9.5mm) AR 400
Main Bearings	Double Row Spherical Roller Bearing
Main Mount Construction	1/2" (12.7mm) AR-400



### Dimensions

<b>A</b> -Overall width	47.25" (120 cm)
<b>B</b> -Cutting Width	35" (90 cm)
<b>C</b> -Overall Height	25.75" (65.4 cm)
<b>D</b> -Overall Depth	28.5" (72.4 cm)